



PORTAGE PRIDE:



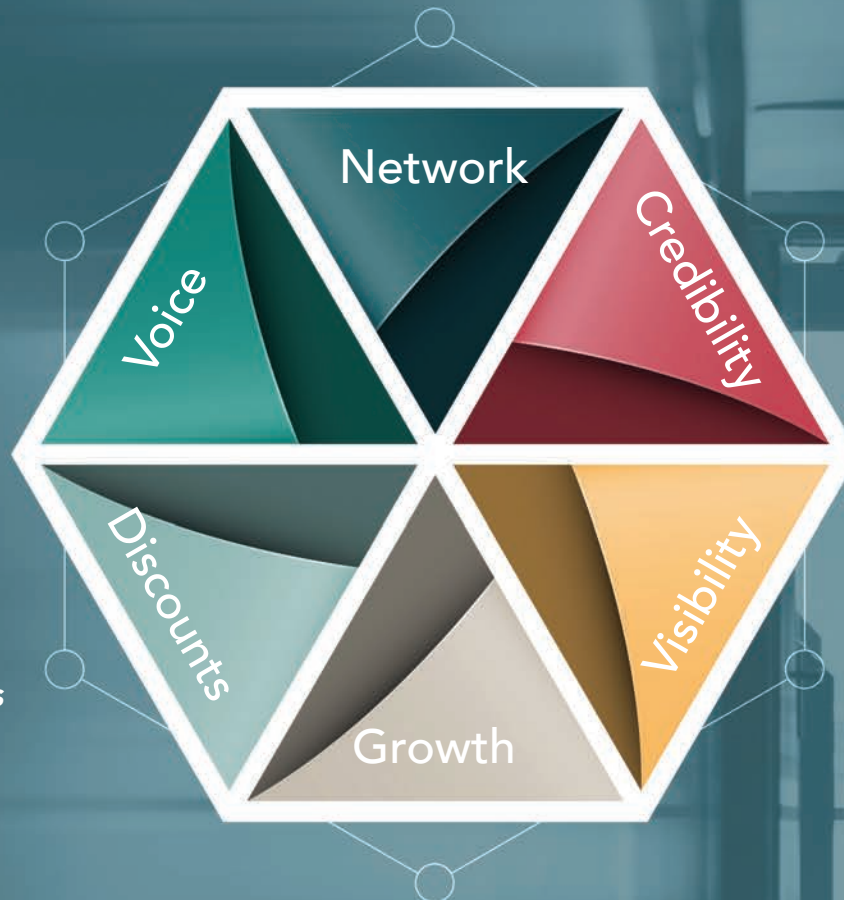
Our Community
2021-2022



Let The Greater Portage Chamber of Commerce Help You Make the Connections & Resources Needed For Business Success.

It's NOT just who you know, it's who others know!

Networking is powerful!



We advocate on your behalf! Gain a say in what happens through the Chamber's advocacy efforts.

Your reputation matters! Chamber membership is respected by the community!

Member to Member Discounts increase your buying power!

Businesses can offer a discount for products and services.

STAND OUT and GET NOTICED as an active member of your community!

Quality Training & Educational Opportunities.

Economic Growth in bringing business to the area by promoting tourism and events.

OUR MISSION

To support our community and enhance growth, connections, and opportunities in a business-friendly environment for new and existing members.

OUR VISION

To be recognized as a reliable resource that is integral to the success of our business community.

OUR GOAL

To build a stronger business community.

Invest in your business and your community & BECOME A PORTAGE CHAMBER MEMBER TODAY!

219-762-3300 | portageinchamber.com

2021-22

A PROFILE OF OUR COMMUNITY

4	30
A Chamber Welcome	Map of Our Area
6	34
Letter from Our Mayor	Portage Summer Music Series
10	38
Annual Chamber Events	Portage Economic Development Corp.
13	40
Parks Spring & Fall Sports	Portage Parks Rental Facilities
15	42
Demographic Info.	Market, Music & Movies on the Square
18	43
Events in Portage	Other Events in Portage
19	44
Portage Field Forces: Only Rain Down the Storm Drain	Community Contacts
22	47
City of Portage Depts.	Chamber Membership Benefits
24	
Portage Township Trustee	
26	
Government Officials	

Our Advertisers:

1st Source Bank.....	34
American Insurance of NWI.....	28
Best Western.....	46
Boost Mobile	22
Boys & Girls Club	29
Caring Hearts.....	19
Centier Bank.....	7
CEI	35
CLH CPAS	8
Community Healthcare System.....	20
Horizon Bank	12
Marina Shores	14
Ma's Lil Champs	35
Minuteman Press.....	7
MonoSol.....	32
Moses Caregivers	8
Northwest Health	36
NWI 360 Tours.....	46
PATH	29
PCCF.....	33
Portage Compost Site	16
Portage Field Forces	19
Portage Real Estate	48
Portage Township Schools.....	25
Portage Township Trustee.....	24
Portage Township Ed. Found.....	12
Porter County Public Library	21
Public Service Adjusting	45
Regional Federal Credit Union.....	32
Samuelson Insurance	9
YMCA	37



6340 East Main Street, Suite A
Portage, IN 46368

219-762-3300
info@portageinchamber.com



A WARM WELCOME FROM THE

Welcome to Portage, Indiana and all the best that we have to offer! Portage is a growing community just 25 miles away from the hustle and bustle of Chicago. With its serene area beaches and parks, Portage seems like a world away from the big city. Our Port of Indiana supports nearly 75 international vessels as they make their way every year from the Atlantic Ocean, through the St. Lawrence Seaway in Canada, into the Great Lakes and to the Port of Indiana-Burns Harbor. Visitors can tour the nearby Indiana Dunes NATIONAL Park which offers camping, boating, swimming, picnicking, hiking and nature viewing.

Founders Square Park is our central downtown location. Located off of Central Avenue, this area consists of an entertainment pavilion, splash pad, Hannah's Hope park, which will allow disabled and abled children to swing together, newly renovated Police Dept. as well as a new Fire Station. The Promenade, located in Founders Square, encompasses residential and commercial businesses for a beautiful downtown feel. Founders Square is a beautiful place to enjoy the market, movies, concerts in the park, car shows and many community events.

It is an exciting time to be a member of the Portage Chamber of Commerce. The Portage Chamber has nearly 400 members. It's an exciting time to be a part of the Chamber. This past year has taking a toll on many businesses due to the Pandemic. We have been marshaling all of

our resources to help companies stay afloat and keep paychecks flowing to workers and families; mobilize the business community to combat the pandemic; and help companies prepare for a safe, successful, and sustainable reopening of the economy. We are always creating new networking and promotional opportunities to help our member businesses succeed and grow. Our monthly MidWeek Mingles and Educational Rise, Shine and Share Series offers a great networking opportunity for our members. Other great events that allow our member businesses to gain visibility include the Portage Community and Business Night, with more than 700 attendees, our 38th Annual Spring Swing Golf Outing, in addition to our Portage "Fish-On" Outdoor Vendor Show.



GREATER PORTAGE CHAMBER OF COMMERCE

Our online business directory is another service the Portage Chamber of Commerce provides to the local community. Portage is such a wonderful city to both live & work. "Being a member and ambassador of the Greater Portage Chamber of Commerce has been a rewarding ewwvexperience. I have met so many remarkable people who have become great business connections, friends and clients. I encourage folks to become active members and look forward to seeing their businesses grow along with our wonderful city of Portage!" states Mike Scanlan, Financial Advisor with Edward Jones. We continue to offer "Member to Member" Deals as well as our "Gift Certificate Program" to encourage you to think local, shop local! By supporting the businesses in our directory, you are re-investing in your community.

//

I have met so many remarkable people who have become great business connections, friends and clients.

//

Mike Scanlan,
Financial Advisor
Edward Jones

Portage has emphasized diversified growth as evidence of a healthy mix of commercial and industrial development, especially on the North side in our Ameriplex at the Port Development. The South side of Portage continues to grow with a booming uprising of retail establishments. Our school district is second to none serving over 8,700 students in the district.

If you are new to the city of Portage and/or are interested in relocating here, you will find a world of information in this Community Profile Publication brought to you through the efforts of the Greater Portage Chamber of Commerce.



Nancy Simpson

Nancy Simpson
Executive Director
Portage Chamber of Commerce
(219) 762-3300
portageinchamber.com



FROM THE DESK OF

OUR MAYOR

Welcome to Portage! Whether you are a business owner, resident or just stopping by for a visit, we are excited to have you here.

Come visit us by boat, bike, train or the interstate. Portage is proud to be home to the Indiana Dunes National Park, Lake Michigan and the Prairie Duneland, Marquette Greenway and Iron Horse trails as well as the South Shore Rail Commuter Line.

Portage is home to the Port of Indiana, Ameriplex at the Port business park and many other commercial industries which provide high quality jobs to our residents.

Portage is located just 40 miles southeast of Chicago and is easily accessible from the Indiana Toll Road or Interstate 80/94.

We are surrounded by scenic beauty with our 15 parks and over 10 miles of paved trails.

Downtown Founders Square Park hosts the Market on the Square, including music, movies and vendors each Friday during the summer months. The square is also the home to other festivals, including our Independence Day celebration and Mistletoe on Main, our Christmas celebration.

It also hosts Hannah's Hope, an all-inclusive playground, and our Splash Pad where children can cool off on a hot summer day.

If you are looking for a rugged mountain biking experience, why not try our Outback Trail located at Imagination Glen. Imagination Glen is also the home to soccer fields and a BMX track, which attracts locals and visitors to compete throughout the summer.

If you are a boater we invite you to explore the Sammie L. Maletta Public Marina where not only are slips available to dock your boat during the season, but there is a launch area for occasional boaters or kayakers who are looking to make day trips to the area.

Portage is also home to many retail shops including national retailers from Bass Pro Shops to Kohl's, Meijers, and Wal-Mart. Several local retail shops can also be found along U.S. 6, Central Avenue or in the interstate corridor.

From north to south there are several great restaurants sprinkled throughout the city for your dining pleasure.

Public safety and quality of life for our residents is a priority. Our Police and Fire Departments are second to none; and we strive to provide the most up to date technology, equipment and training available to all of our emergency responders.

We are proud of the hard work and dedication of our city workforce, maintaining a city the size of Portage is a big job and they do it well.



While we were sidelined by Covid in our first year as an administration we are aggressively moving forward with many, new exciting projects such as the continued expansion of the Marquette Greenway Trail, paving roadways and improving our infrastructure, constructing a safer entryway into the YMCA, constructing a new plaza in between the police and fire stations and completing upgrades to Founders Square, to name just a few.

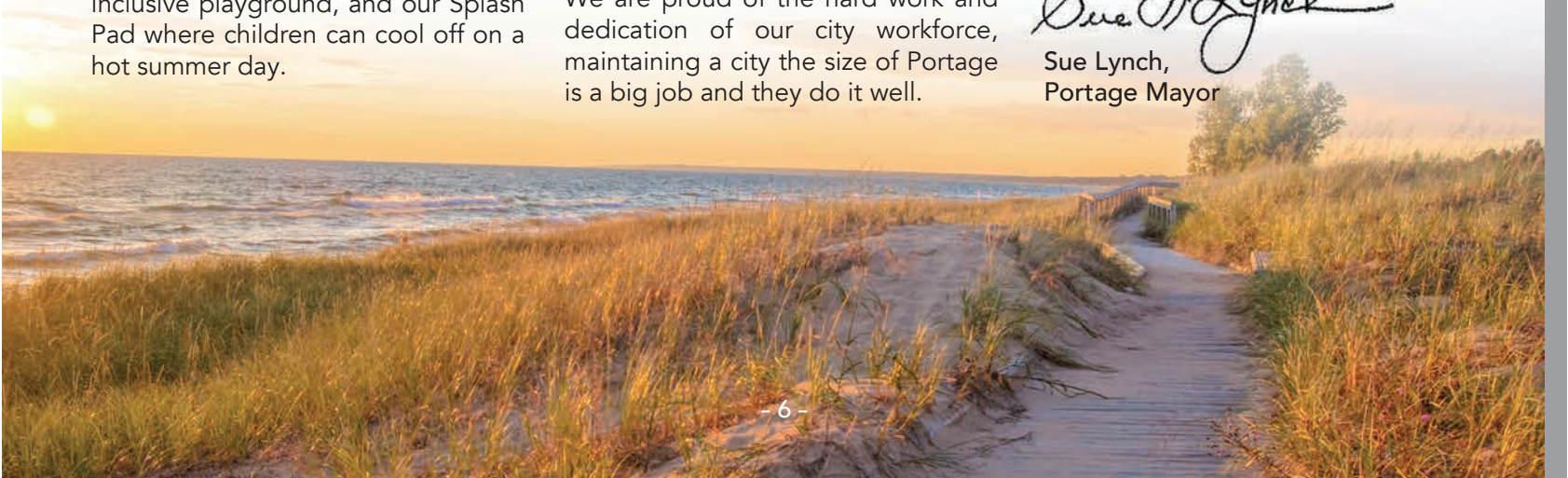
Whatever brings you to Portage we hope you have a safe, enjoyable experience. I want to thank all of our residents for their support, trust and pride in our community.

And to our visitors, please come see us again, soon. I am sure you will agree, Portage is a great place to live, work and play.

Sincerely,

A handwritten signature in black ink that reads "Sue Lynch".

Sue Lynch,
Portage Mayor



PROUD UNION PRINTER

CLH EST. 1992 CPAs & CONSULTANTS

through every season

BUSINESS CONSULTING ♦ VALUATIONS ♦ TAX PREPARATION
TAX PLANNING ♦ ACCOUNTING ♦ BOOKKEEPING
FINANCIAL REPORTING ♦ ATTESTATION ♦ ESTATE PLANNING

MICHIGAN CITY
219.874.0210

VALPARAISO
219.615.0210



WWW.CLH-CPA.COM



CLH.CPA



CLH-CPA



**Moses
Caregivers**

Where Seniors Count!!!!
219-508-7004

What Moses Caregivers Offers You

- ♥ Newly Equipped and Furnished Home
- ♥ Six Private Bedrooms
- ♥ Two living rooms for watching TV, visiting with the staff or family
- ♥ 24 hour kind and caring staff
- ♥ Registered nurse on staff
- ♥ Home cooked meals-three meals a day plus snacks
- ♥ Personal assistance with all daily activities including dressing, showers and toiletry
- ♥ Private pay, no insurance taken
- ♥ Lower cost than a nursing home with constant care
- ♥ Hospice Patients Welcome

The high level of attention and care provided at the Moses Home distinguishes itself from other senior care facilities. With six resident clients we have three or more staff during the day and two staff at night.



SAMUELSON INSURANCE AGENCY

AUTO • HOME • LIFE • COMMERCIAL

219-762-3702 – info@samuelsonagency.com

www.SamuelsonAgency.com

We are family owned, locally operated, and a Veteran-Owned business. James Hazzard, Agency Principal, leads a team of licensed agents to uphold a fierce commitment to both our clients and our community. Call us at **219-762-3702** to discuss your needs and how best we can help.

Samuelson is now in our 95th year of serving our clients with licensed and experienced agents.



Since 1926, Samuelson has provided local homeowners and businesses with all of their insurance needs.

a small sampling of our carrier partners



Insuring Business and Family Needs Since 1926 • Veteran-Owned
219.762.3702 O • 219.763.3112 F • 6730 CENTRAL AVENUE, PORTAGE, INDIANA 46368



38th Annual
**SPRING SWING -
GOLF OUTING**

FRI, JUNE 18, 2021
9:00 AM - 5:00 PM

ROBBINHURST GOLF COURSE
383 West 875 North, Valparaiso



18th Annual
**PORTAGE COMMUNITY
& BUSINESS NIGHT**

THURS, JULY 8, 2021
4:00 PM - 7:00 PM

FOUNDERS SQUARE
Central Avenue, Portage

**BEER GARDEN ~ FOOD TRUCKS
LIVE ENTERTAINMENT**

7th Annual
CAR SHOW & FUNDRAISER

THURS, AUG 19, 2021
4:00 PM - 7:00 PM

**RITTENHOUSE VILLAGE AT
PORTAGE SENIOR LIVING**
6235 Sterling Creek Rd, Portage



Portage Chamber is proud to partner with the following businesses in our community. With many thanks to:



Annual Chamber Events



ANNUAL CHAMBER NETWORK NIGHT

THURS, OCT 21, 2021
4:00 PM - 7:00 PM

PORTER CTY EXPO CENTER
215 East Division Rd, Valparaiso



ANNUAL BANQUET

FRI, NOV 12, 2021
4:00 PM - 7:00 PM

WOODLAND PARK
2100 Willowcreek Road, Portage



5th Annual PORTAGE FISHING & OUTDOOR SHOW

SAT, FEB 26, 2022
9:00 AM - 4:00 PM

SUN, FEB 27, 2022
9:00 AM - 3:00 PM

WOODLAND PARK
2100 Willowcreek Rd, Portage

Northwest Health
Porter

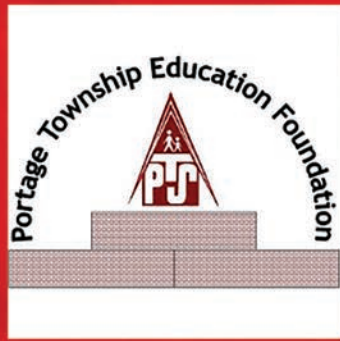
HORIZON
BANK



1st Source Bank

Moses
Caregivers





PORTAGE TOWNSHIP EDUCATION FOUNDATION

The PTEF engages the community in
fundraising efforts
supporting grant programs
that directly impact
students in the Portage Township Schools.

For more information
please contact
ptefinfo@portage.k12.in.us



IMAGINE... A PLACE WHERE COMMUNITY & BUSINESS THRIVE

We're dedicated to strengthening
our community one customer at a
time. We take time to listen and
understand your financial concerns
and offer banking solutions tailored
to fit your needs.

2650 Willowcreek Rd.
(219) 763-9570



HorizonBank.com



GET OUT & PLAY WITH PORTAGE PARKS

For more details on our sports programs,
call the City of Portage Parks & Recreation Dept:
219-762-1675

YOU CAN REGISTER ONLINE AT:
WWW.INPORTAGEPARKS.COM

ADULT SOFTBALL

SOFTBALL: SPRING

Registration: Opens Feb 1st
Season Begins: In April
Time: Games begin at 6:00pm
Days: Sunday - Thursday
Where: Imagination Glen Park
Ages: 18 and up

SOFTBALL: FALL

Registration: Opens June 1st
Season Begins: In August
Time: Games begin at 6:00pm
Days: Sunday - Thursday
Where: Imagination Glen Park
Ages: 18 and up

ADULT VOLLEYBALL

VOLLEYBALL: SPRING

Registration: Opens March 1st
Men, Women & Co-ed Teams
Season: April 7th - May 26th
Time: Games begin at 6:00pm
Day: Wednesday
Where: Woodland Park
Ages: 18 and up

VOLLEYBALL: FALL

Registration: Opens July 1st
Men, Women & Co-ed Teams
Season: September - October
Time: Games begin at 6:00pm
Day: TBD
Where: Woodland Park
Ages: 18 and up

YOUTH SOCCER

OUTDOOR: SPRING

Registration: Opens March 1st
Season Begins: In April
Schedule: A week night practice
and a game on Sat.;
6 games played total
Ages: 3-14 (Boys & Girls)
Where: Imagination Glen Park
*Recreational League-Teams are
chosen at random.*
R/NR: \$55/\$65
VOLUNTEER COACHES NEEDED!

OUTDOOR: FALL

Registration: Opens July 15th
Season Begins: In August
Schedule: A week night practice
and a game on Sat.;
6 games played total
Ages: 3-14 (Boys & Girls)
Where: Imagination Glen Park
*Recreational League-Teams are
chosen at random.*
R/NR: \$55/\$65
VOLUNTEER COACHES NEEDED!

MARINA SHORES

AT DUNE HARBOR



NOW OPEN!

Our restaurant is now open to the public featuring American Key West Style cuisine. We have indoor and outdoor dining with spectacular marina views. Marina Shores Yacht Club – *where everyone's a member!*

Marina Shores
Yacht Club & Event Center

Book Your Next Event With Us!



OPEN TO THE PUBLIC!

5987 S. Dune Harbor Drive
Portage, Indiana
www.MarinaShoresIndiana.com
219-841-9113



DEMOGRAPHICS

Labor Force Statistics	City of Portage		Ogden Dunes		South Haven	
Population 16 years and over	29,707	100.0%	1,036	100.0%	3,974	100.0%
Total Population in Labor Force	18,329	61.7%	622	60.0%	2,432	61.2%
Total Number Employed	17,354	58.6%	592	58.9%	2,372	57.2%
Total Population Not in Labor Force	11,378	38.3%	414	40.0%	1,542	38.8%

Occupation	City of Portage		Ogden Dunes		South Haven	
Management, Business, Science & Arts	4,684	27.0%	416	70.3%	498	21.0%
Service	3,533	20.4%	33	5.6%	519	21.9%
Sales and Office	3,548	20.4%	96	16.2%	566	23.9%
Natural Resources, Construction & Maintenance	2,093	12.1%	22	3.7%	352	14.8%
Production, Transportation & Materials Moving	3,545	20.4%	43	7.3%	339	14.3%

Industry	City of Portage		Ogden Dunes		South Haven	
Agriculture, Forestry, Fishing and Hunting & Mining	81	0.0%	6	1.0%	36	2.0%
Construction	1,085	6.3%	15	2.5%	220	9.3%
Manufacturing	3,117	18.0%	75	12.7%	237	10.0%
Wholesale Trade	348	2.0%	23	3.9%	69	2.9%
Retail Trade	1,943	11.2%	35	5.9%	279	11.8%
Transportation & Warehousing & Utilities	1,273	7.3%	9	1.5%	179	7.5%
Information	315	1.8%	4	0.7%	30	1.3%
Finance, Insurance, Real Estate, Rental & Leasing	681	3.9%	62	10.5%	87	3.7%
Professional, Scientific, Management, Administrative, & Waste Mgt. Services	1,508	8.7%	119	20.1%	148	6.2%
Education, Health Care & Social Assistance	3,448	19.9%	218	36.8%	472	19.9%
Arts, Entertainment, Recreation, Accommodation & Food Services	2,185	12.6%	10	1.7%	297	12.5%
Other Services, except Public Admin.	755	4.4%	25	4.2%	122	5.1%
Public Administration	664	3.8%	8	1.4%	98	4.1%

(continued on page 17)



Porter County
**RECYCLING
& WASTE REDUCTION**

Portage Compost Site

Porter County residents can drop off yard waste including leaves, brush, branches and logs.

Residents also have access to free compost and wood mulch while supplies are available—hand shovel only.

Hours of Operation

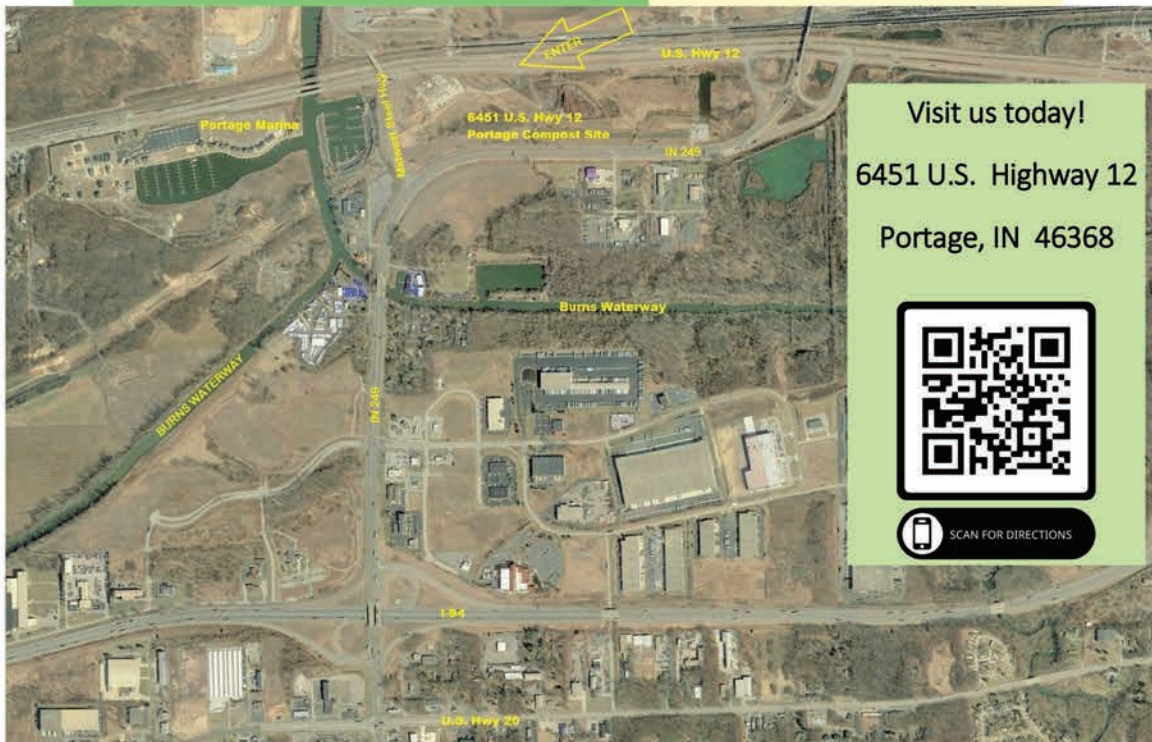
March 22 - December 4*

**Monday through Saturday
8:00 a.m. to 3:00 p.m.**

(219) 465-3694

www.PorterCountyRecycling.org

**tentative schedule*



DEMOGRAPHICS *(continued from p15)*

Population Information	City of Portage		Portage Township		Ogden Dunes		South Haven	
Total Population	36,648	100.0%	47,230	100.0%	1,163	100.0%	5,092	100.0%
Male	17,540	47.9%	22,779	48.2%	611	52.5%	2,577	50.6%
Female	19,108	52.1%	24,451	51.8%	552	47.5%	2,515	49.4%
Median Age (years)	38.4		38.3		57.0		38.2	
Under 18	8,055	22.0%	10,766	22.8%	141	12.1%	1,230	24.2%
18-64	22,940	62.6%	29,227	61.9%	658	56.6%	3,028	59.5%
65 and older	5,653	15.4%	7,237	15.3%	364	31.3%	834	16.4%
Population Estimates								
Total Population (2013)	36,752		47,153		1,206		5,093	
Total Population Change (range)	-104	-0.3%	77	0.2%	-43	-3.6%	-1	-0.0%

Household Statistics	City of Portage		Portage Township		Ogden Dunes		South Haven	
Total Households	14,764	100.0%	18,455	100.0%	506	100.0%	1,890	100.0%
Total Families	9,527	64.5%	12,448	67.5%	358	70.8%	1,380	73.0%
Homes with Own Children Under 18	4,126	27.9%	5,427	29.4%	75	14.8%	575	30.4%
Married Couple Family Households	6,285	42.6%	8,348	45.2%	326	64.4%	904	47.8%
With Own Children Under 18	2,279	15.4%	3,067	16.6%	74	14.6%	261	13.8%
Non Family Households	5,237	35.5%	6,007	32.5%	148	29.2%	510	27.0%
Householder Living Alone	4,326	29.3%	4,891	26.5%	113	22.3%	389	20.6%
Householder 65+ Living Alone	1,521	10.3%	1,864	10.1%	73	14.4%	197	10.4%
Average Household Size	2.46		2.54		2.3		2.69	
Average Family Size	3.07		3.09		2.69		3.07	
Households with Individuals < 18	4,636	31.4%	6,053	32.8%	75	14.8%	595	31.5%
Households with Individuals > 60	5,477	37.1%	7,068	38.3%	310	61.3%	832	44.0%
TOTAL: Owner-Occupied Households	10,059	68.1%	12,705	69.7%	470	92.9%	1,369	72.4%
TOTAL: Renter-Occupied Households	4,705	31.9%	5,520	30.3%	36	7.1%	521	26.0%

Housing Occupancy	City of Portage		Portage Township		Ogden Dunes		South Haven	
Total Housing Units	15,564	100.0%	19,331	100.0%	614	100.0%	2,005	100.0%
Occupied Housing Units	14,764	94.9%	18,225	94.3%	506	82.4%	1,890	94.3%
Vacant Housing Units	800	5.1%	1,106	5.7%	108	17.6%	115	5.7%
Median Value	\$152,500		\$142,600		\$354,800		\$120,700	

Income Information	City of Portage		Portage Township		Ogden Dunes		South Haven	
Median Household Income	\$58,486		\$60,154		\$118,750		\$53,553	
Median Family Income	\$70,849		\$70,799		\$156,250		\$62,321	
Per Capita Income	\$27,729		\$28,121		\$64,408		\$23,377	
Median Male: Full-Time, Yearly	\$57,509		\$59,460		\$103,977		\$47,461	
Median Female: Full-Time, Yearly	\$34,721		\$35,469		\$73,977		\$35,938	



9th Annual Spring Jewelry & Craft Show

Sat, April 9 & Sun, April 10
9:00 am - 3:00 pm
Woodland Park, Oakwood Hall
2-day event/FREE ADMISSION
Please bring an item for the
Portage Food Pantry.

Daddy Daughter Dance

Friday, May 7
Woodland Park

Mother Son Event

Saturday, May 8
Woodland Park

Wine & Canvas at the Lakefront**

May 27, Sept 23, & Dec 9
Doors open at 5:00 pm
Painting starts at 6:00 pm
Portage Lakefront &
Riverwalk Pavilion

Cost: \$55

Cost includes canvas/dinner, limited
open bar, and a beautiful view.

****Must be 21 or older**

Summer Camps

Cooking Camp: July 12-16
Craft Camp: July 19-23
Sports Camp: July 26-30
Water Camp: Aug 2-6



Adopt Don't Shop

Friday, May 14
3:00 pm - 8:00 pm
Founders Square

Lakeshore Paws will be at the opening
day of the Market on the Square!
Dogs are available for adoption.

Portage Cruise Night

Every Tuesday, May-August
5:00 pm - 8:00 pm
Front (East) Parking Lot at
Woodland Park

FREE ADMISSION

Harvest Festival

Sat, October 2
11:00 am - 7:00 pm
Founders Square

Food vendors, crafts, pony rides



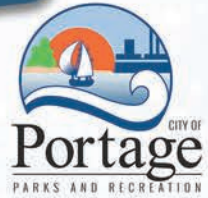
Annual Haunted Hayride

October 21, 22, 23
(Thursday, Friday & Saturday)
6:30 pm - 9:30 pm
Woodland Park

Cost: \$3/per ride

Not recommended for children
under 3 years of age

COME OUT
AND HAVE
SOME FUN!



Haunted Hayride Scenes Wanted

Does your civic club or scout troop
need to raise money for a special
project? Gather your friends and
family members to create, construct,
and operate a scene for the three-
day event. You will earn \$200 for each
scene and additional money for 1st
through 3rd prizes.

Contact the Parks Department to
reserve your spot at 762-1675.



34th Annual Christmas Craft Show

December 4 & 5
9:00 am - 3:00 pm
Woodland Park
Sycamore & Oakwood Hall

There will be over 70 quality vendors
to help you get a jump start on your
Christmas shopping! Concessions will
be available for purchase! Door prizes
drawn every hour.

2022

Daddy Daughter Dance

NO TICKET SALES AT DOOR!

February, 4, 2022
6:00 am - 8:30 pm
Woodland Park/Oakwood Hall

Ages: 3 and up

Cost: \$20 per person

Included in cost:

Dinner, beverage, dessert, music,
a corsage for each young lady,
and one 5x7 memoir photo.



5590 Old Porter Rd. Portage, IN 46368 (219) 763-2986

ONLY RAIN DOWN THE STORM DRAIN

STORM DRAINS LEAD TO STREAMS, LAKES,
AND WETLANDS. POLLUTION CAN HARM
WILDLIFE AND CONTAMINATE OUR
DRINKING WATER AND SPOIL OUR
RECREATIONAL AREAS

- IT IS VERY IMPORTANT THAT YOU
- NEVER DUMP ANYTHING INTO STORM
DRAINS! ESPECIALLY GRASS CLIPPINGS!
 - CLEAN UP AFTER YOUR PET
 - DO NOT LITTER
 - DO NOT DUMP ANYTHING ON THE BANKS
OF THE CREEK OR IN THE CREEK
- PREVENTING WATER POLLUTION BEGINS WITH YOU



HOURS: Monday – Friday
8:00AM – 5:30PM



Having issues with finding help, caring for your loved ones?

Looking for time to go to a Doctor appt., or shopping for yourself?

Caring Hearts Adult Day Services, provides Non-Medical, Medical and Wellness Coordination, social activities, crafts, and entertainment.

Private Pay, Long Term Care Insurance, and Medicaid waiver accepted.

Contact Karen at 219-841-5787 to set up a tour.



COMMUNITY HEALTHCARE SYSTEM®
St. Mary Medical Center & Community Care Network

Proudly
Serving Portage



Willowcreek Health Center

3170 Willowcreek Rd., Portage

- Hyperbaric Treatment
- Wound Care
- Occupational Health



Portage Health Center I

6375 U.S. Hwy. 6, Portage

- Allergy
- Cardiology
- Family Medicine
- Orthopedics



Portage Health Center II

3545 Arbors Blvd., Portage

- Family Medicine
- Laboratory
- MRI/X-ray/CT/EKG/Imaging
- Nuclear Medicine
- OB/GYN
- Therapy Services/Dizziness and Balance Clinic
- Ultrasound
- Urology

extraordinary**people**
extraordinary**care**

COMHS.org



PORTER COUNTY
PUBLIC LIBRARY SYSTEM

At the **Portage Public Library,
books are just the beginning.**



**Streaming movies, tv
shows, and music**



**Programs and activities
for all ages**



**Fine Free borrowing of books,
DVDs, games, and more**



**WiFi, computers, hot spots,
and remote printing**

Portage Public Library
2665 Irving St.
(219) 763-1508

visit us online at
pcpls.org





City Departments

BUILDING DEPARTMENT

762-4204

It is the responsibility of the Building Department to promote public safety by enforcing building standards. Some of their other job responsibilities include:

Contractor Licensing:

Contractors and sub-contractors must be licensed, bonded and insured to work in the City of Portage.

Plan Review:

Review construction plans to ensure they meet compliance with our state & our local requirements.

Building Permits:

Permits are needed to authorize construction & inspections.

Inspections:

Inspect construction for conformance with the plan, the permit and with state & local building codes.

ENGINEERING/GIS DEPT.

762-5425

Engineering:

- Oversees engineering services for the Plan Commission, Redevelopment Commission, Board of Public Works and Safety and Traffic Commission.
- Reviews site plans and subdivision plats for adequacy, accuracy and compliance.
- Designs, manages & inspects city construction projects.
- Inspects private developer construction projects.
- Assists in grant development and administration.
- Manages consultants, contractors & sub-contractors.
- Issues Right-of-Way permits.

Geographic Information System: FOUNDERS SQUARE

- Manages & provides GIS information for the City.
- Maintains & manages the City and utility GIS data base.
- Manages the web services pertaining to City maps.
- Provides resources to City Depts. related to assets, planning and mapping.

FIRE DEPARTMENT

762-7404

Randy Wilkening, Fire Chief

The Portage Fire Dept consists of 62 full time, career EMT/Firefighters, of which 53 are also Paramedics. We respond to over 4500 emergency calls annually from three staffed fire stations.

Portage Fire has a Class 3 Fire Protection Rating while providing fire prevention and investigation services, water rescue capabilities and tactical paramedics to assist the Portage Police SWAT team.



PARKS & RECREATION

762-1675

Portage Parks provides quality recreation programming for people of all ages and abilities. Our 15 parks and trail system offer 612 total acres for the enjoyment of our community throughout the seasons.



Ran

Wireless Consultant

6534 U.S. Highway 6
Portage, IN 46368
Store: (219) 787-8000
Hours: Mon-Fri 9am-7pm, Sat 9am-6pm
boostmobileofportage@gmail.com



PLANNING & COMMUNITY DEVELOPMENT

764-5746

The Dept. of Planning & Community Development guides the physical development of the city and facilitates the translation of community values, goals, and objectives into everyday relationships with the built and natural environments. We do this by assisting in the following areas:

Planning:

- Prepares and maintains long-range growth strategies, incl: the City of Portage Comprehensive Plan, City of Portage Northside Master Plan, Central Ave. Business District Master Plan, and planning south of U.S. Hwy 6.
- Administers and updates the City of Portage Zoning Ordinance, incl. Zoning Map, and Subdivision Control Ordinance
- Assists petitioners with application procedures for the Plan Commission, Board of Zoning Appeals, and Development Review Committee
- Provides staff support to the Plan Commission, Board of Zoning Appeals, and Development Review Committee.

Redevelopment/Community Development:

- Assists new businesses in the development stages.
- Oversees purchase/sale of City-owned property.
- Manages projects for the Redevelopment Commission.
- Works with other agencies on a regular basis.

POLICE DEPARTMENT

762-3122

Mike Candiano , Chief of Police

The Portage Police Dept. is comprised of 68 sworn officers, 14 reserve officers, seven civilians, and four Chaplains.

Our Divisions include: Administration, Patrol, Detective Bureau, Community Relations, Records & Police Reserves.

Specialty Assignments include: SWAT, K9, Crash Investigations, Hostage Negotiations, School Resource Officer, Arson Investigations, Bike Patrol, Field Training Officers, Range Instructors, Emergency Vehicle Operations Instructors, and assignments to the Porter County Drug Task Force, U.S. Marshall's Fugitive Task Force, and PCHIT (Porter County Hwy Interdiction Team.)

We have one full-time Code Enforcement Officer, as well as two full-time Animal Control Officers on our team.

REDEVELOPMENT COMMISSION

841-6428

Redevelopment activities are planned, financed and managed by a five-member Redevelopment Commission which was established in 1984.



SAMMIE L. MALETTA PUBLIC MARINA

763-6833

Launch your boat, fish, or grab drinks, snacks and marine supplies from our City Marina, which also offers boat slips, restrooms and picnic areas.

STREETS & SANITATION

762-4564

Our Streets & Sanitation Department is responsible for Recycling & Trash Collection, Leaf & Limb Pick-Up, Snow Plowing and Road Maintenance.

UTILITIES

762-2016

Our Field Department maintains 175 miles of sewer lines, over 2000 manholes, and a large number of sanitary lift stations and storm water lift stations. They also manage storm water runoff to help keep polluted storm water from being discharged into local rivers and streams. The Plant Department treats wastewater.

Portage Stormwater: **763-2986**
Portage Sanitary: **762-1301**
Utilities Billing: **762-7784**

PORTAGE



BRENDAN CLANCY - TRUSTEE

Proudly Serving Portage Township



Township Government

The oldest existing form of government; dating back to the 17th-century. Township Government is a "grassroots" form of government, that is closest to its people. Portage Township; the largest township in Porter County, is comprised of the of the City of Portage, unincorporated Porter County including Duck Creek and South Haven communities as well as the Town of Ogden Dunes .

PORTAGE TOWNSHIP, PORTER COUNTY

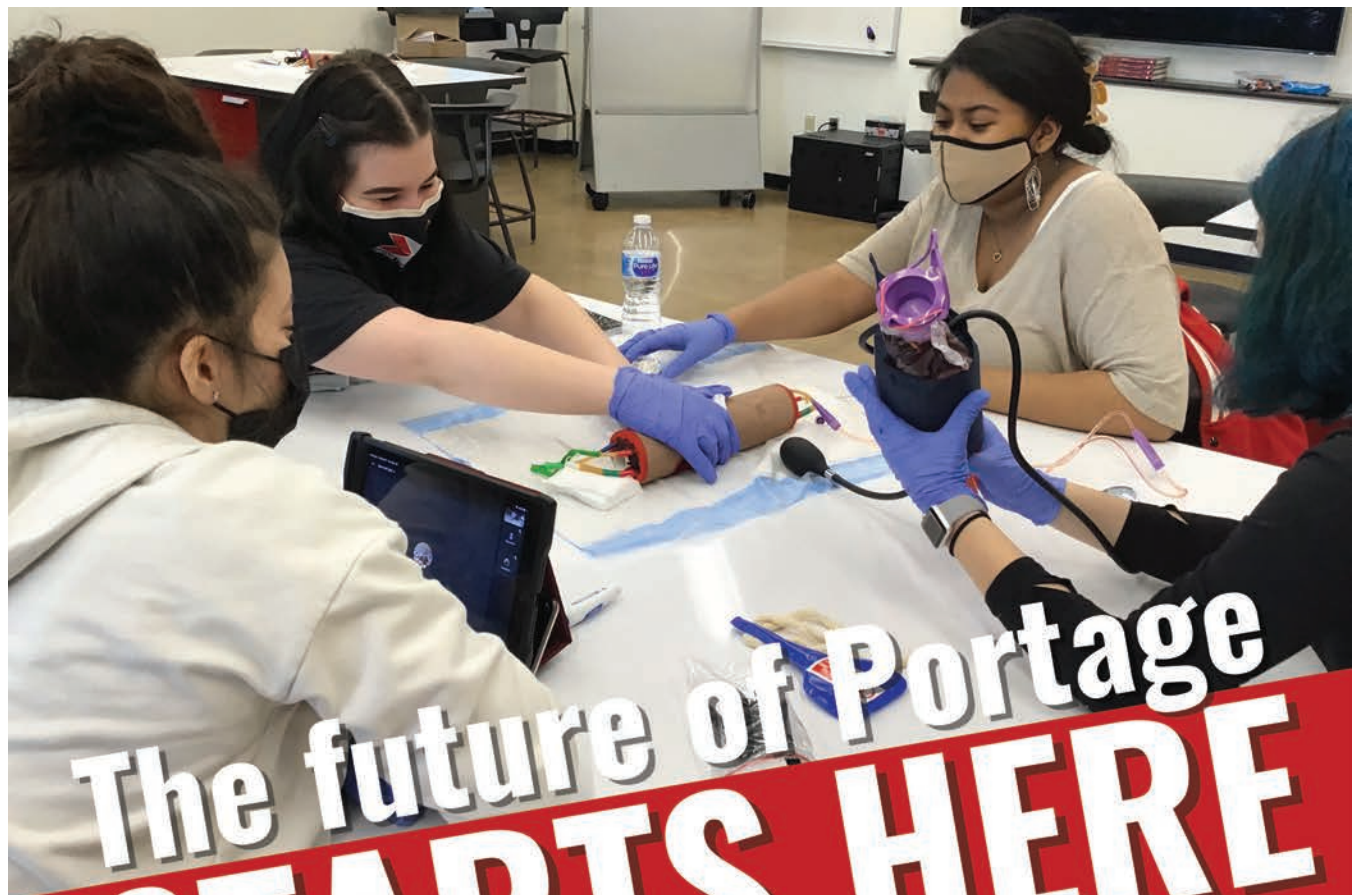


BRENDAN CLANCY
TRUSTEE

Portage Township Trustee's Office	219.762.1623
South Haven Fire Department	219.759.3919
Bonner Senior & Community Center	219.762.3591
Portage Twp. Dept. of Parks & Rec	219.759.5471
Portage Township Cemeteries	219.763.2717

Township Board

Billy Coker Nikita Momola Eric Skalka



The future of Portage STARTS HERE



Educating, Empowering &
Inspiring Excellence

- STEAM programming at all grade levels
- Advanced Placement and Dual Credit courses available
- Award-winning Fine Arts programs
- School advisers and social workers provide social/emotional support
- Over 100 student sports and clubs

Portage Township Schools

6240 U.S. Highway 6
Portage, IN 46368
(219) 762-6511
www.portage.k12.in.us

Follow us on social media!

 @portagetownshipschools

 @Portage_Schools

 @Portage_Schools





The City of Portage's government consists of a Mayor, a Clerk-Treasurer, a seven-member common council, and a staff with a budget for police, fire, street and sanitation, parks, public works, community planning and development, water reclamation, and administrative services.

MAYOR:

Sue Lynch (D)
Ph: 219-762-5425
slynch@portage-in.com

CLERK-TREASURER:

Nina Rivas (D)
Ph: 219-762-7784
Fax: 219-763-9607
nrivas@portage-in.com

PORTAGE TWP TRUSTEE:

Brendan Clancy (D)
Ph: 219-762-1623
Fax: 219-763-9658
brendan.clancy@portagetrustee.org

PORTAGE TWP BOARD:

Billy Coker (D)
Nikita Momola (D)
Eric Skalka (D)

CITY COUNCIL MEMBERS:

1st District: Gina Giese-Hurst (D)
219-406-1413
ggiesehurst@portage-in.com

2nd District: Patrick Clem (D)
219-628-1448
pclem@portage-in.com

3rd District: Scott Williams, Vice Pres. (D)
219-689-8348
swilliams@portage-in.com

4th District: Brian Gulley (D)
219-789-2569
bgulley@portage-in.com

5th District: Collin Czilli, President (D)
219-455-0268
cczilli@portage-in.com

AT-LARGE: Deb Podgorski (D)
219-742-7527
dpodgorski@portage-in.com

AT-LARGE: Ferdinand Alvarez (D)
219-902-9121
falvarez@portage-in.com

CITY HALL:

6070 Central Ave, Portage 46368
www.portagein.gov

Government OFFICIALS

PORTER COUNTY GOV'T

www.porterco.org

PORTER COUNTY OFFICIALS:

Assessor:	Jon M. Snyder (R)
Auditor:	Vicki Urbanik, CPA, CGFM (D)
Clerk:	Jessica Bailey (D)
Coroner:	Cyndi Dykes (R)
Prosecutor:	Gary zn (D)
Recorder:	Chuck Harris (R)
Sheriff:	David M. Reynolds (D)
Surveyor:	Kevin D. Breitzke (D)
Treasurer:	Michelle Clancy (D)

PORTER COUNTY COMMISSIONERS:

District 1 (South):	Laura Shurr Blaney (D)
District 2 (Center):	Jeff Good (R)
District 3 (North):	Jim Biggs (R)

PORTER COUNY COUNCIL:

1st District:	Bob Poparad (D)
2nd District:	Jeremy Rivas (D)
3rd District:	Greg Simms (D)
4th District:	Mike Jessen (R)
At-Large:	Andy Bozak (R)
At-Large:	Mike Brickner (R)
At-Large:	Sylvia Graham (D)

PORTER COUNTY SUPERIOR / CIRCUIT COURT JUDGES:

Superior Court 1:	Michael Fish (R)
Superior Court 2:	Jeffrey Clymer (R)
Superior Court 3:	Michael Drenth (R)
Superior Court 4:	Christopher Buckley (R)
Superior Court 5:	Mary DeBoer (R)
Superior Court 6:	Jeffrey Thode (R)

STATE OF INDIANA GOV'T

www.in.gov

REPRESENTATIVES:

1st District:	Frank Mrvan (D)
2nd District:	Jackie Walorski (R)
3rd District:	Jim Banks (R)
4th District:	James Baird (R)
5th District:	Victoria Spartz (R)
6th District:	Greg Pence (R)
7th District:	André Carson (D)
8th District:	Larry Bucshon (R)
9th District:	Trey Hollingsworth (R)

FEDERAL GOV'T

www.usa.gov

Governor:	Eric Holcomb (R)
Lieutenant Gov:	Suzanne Crouch (R)
Attorney General:	Todd Rokita (R)
US Senators:	Mike Braun (R) Todd Young (R)

American Insurance of NWI, LLC



**GREAT QUALITY.
GREAT SUPPORT.
GREAT SERVICE.**



**DAVID
GONZALEZ**
Licensed Sales Agent

(219) 841-9906
dgonzalez958@outlook.com

6340 E. Main St. Suite A, Portage, IN 46368

ABOUT US

At American Insurance of NWI, LLC, we pride ourselves on being the experts our clients need when faced with questions about their coverage.

From the most basic of health coverage to protecting your financial security and legacy from unexpected loss or catastrophic illness, American Insurance of NWI, LLC is here for you.

SERVICES

MEDICARE SUPPLEMENT PLANS

Medicare Supplement Plans are designed to complement your Medicare coverage and help fill the gaps that Medicare leaves.

MEDICARE ADVANTAGE PLANS

Medicare Advantage Plans are designed in a cost-share structure. These plans may come at a lower premium than a Medicare Supplement Plan, but do incur some healthcare costs in the form of co-pays and deductibles.

PRESCRIPTION DRUG PLANS

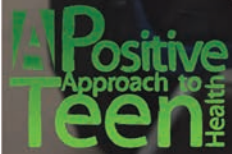
We can help you find the Prescription Drug Plan that is right for you. We will review each plan's cost sharing amounts with you and help determine which plan covers your prescriptions.

By responding to this advertisement, I understand a sales agent may contact me by telephone, email or mail to discuss Medicare Advantage plans and Prescription Drug plans, and Medicare Supplement Insurance plans.



A POSITIVE APPROACH TO TEEN HEALTH

Our mission is to EQUIP, EMPOWER, and ENCOURAGE teens to make healthy choices through life skills, relationship, and character building education.

SERVED OVER 300,000 YOUTH



219.254.2678

  @positiveteenhealth
www.positiveteenhealth.org



BOYS & GIRLS CLUBS
OF GREATER
NORTHWEST INDIANA

GREAT FUTURES START HERE.

\$40 Annual Membership

Our Clubs offer free tutoring, daily snacks, mentoring, athletic leagues, college tours, financial literacy programs and so much more to prepare our youth for bright futures.

Two Clubs in the local Portage area!

Portage Club • 5895 Evergreen Ave. • Portage, IN • 46368
219-762-4613

South Haven Club • 723 Long Run Road • Valparaiso, IN • 46385
219-759-2565

Open Monday - Friday after school until 7:00 p.m.

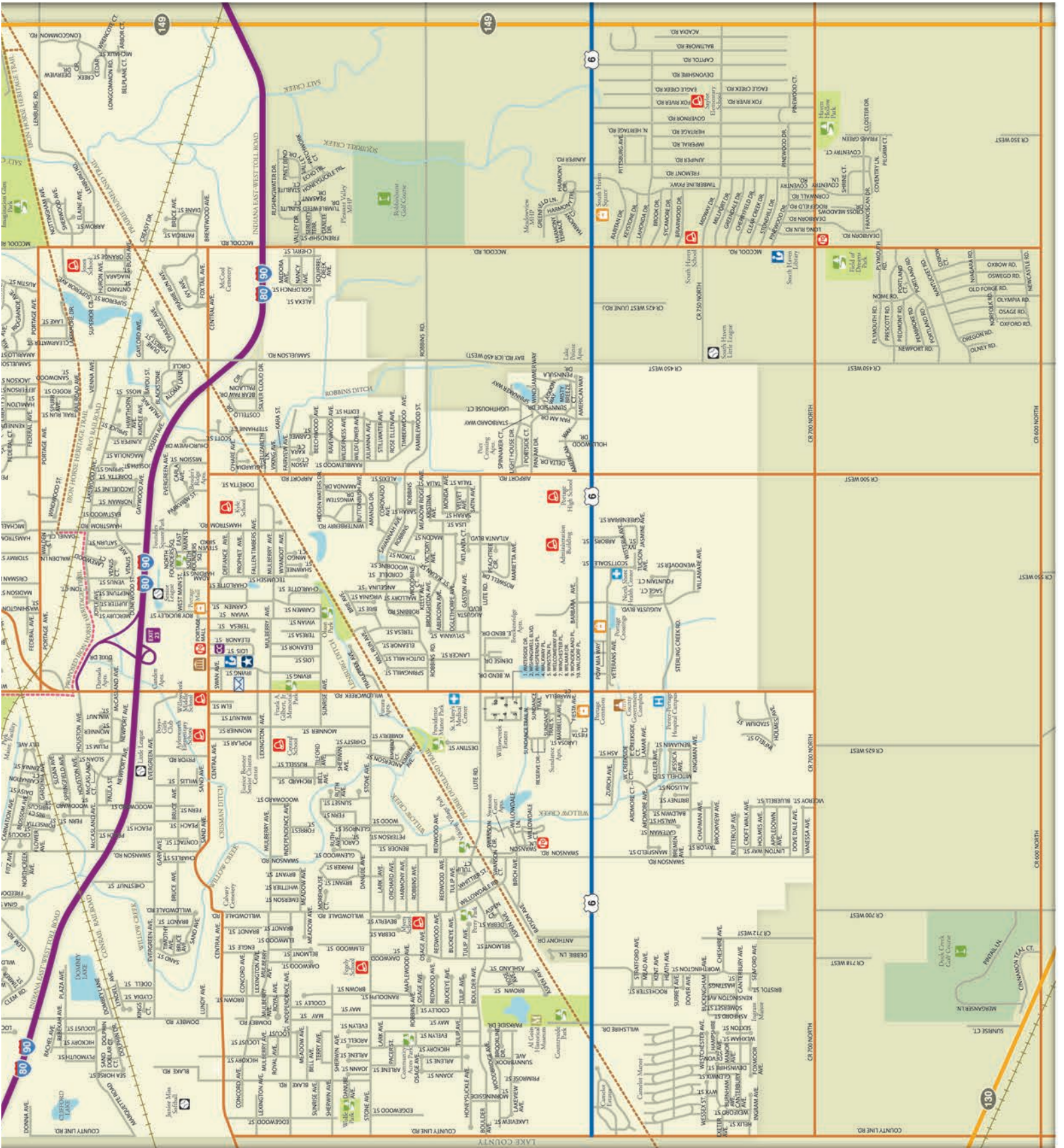
Transportation is provided during the school year to the Clubs.

We offer an all-day summer program that keeps kids engaged, learning and having fun.

bgcgreaternwi.org







MonoSol is a Proud Sponsor of the Portage Chamber of Commerce

At MonoSol, our business
is helping our planet
and the people on it.

Striving to positively impact the world
outside our front door, we proudly partner
with many diverse organizations in our
communities.

kuraray



Learn more about our initiatives at
www.MonoSol.com

Refinance your Business Loan

REGIONAL is ready to refinance your
business loan and help you save money.

Talk to a Business Lending Expert today!

1-800-762-7419
REGIONALFCU.ORG



REGIONAL
federal credit union



Celebrating 25 years of helping you
maximize the impact of your generosity.



The Hufford Family

It's easy. Tell us what you **love**,
discover your options, make a
powerful gift that lasts!

www.pccf.gives | 219.465.0294

PORTAGE SUMMER MUSIC SERIES

CONCERTS ARE
EVERY TUESDAY

from

JUNE 1 - AUG 31

Performances each week will be

6:00 pm - 7:30 pm

This (indoor) venue is located in

**Woodland Park/
Oakwood Hall**

★ **FOOD CONCESSION** ★

★ **CASH BAR** ★

★ **SEATING PROVIDED** ★

Trusted **business banking** from a
leading community bank.



Checking That's
Right for any
Business



Streamlining
Treasury Services



Easy-To-Apply
Loan Options



Retirement and
Business Planning
Services

1st Source Bank

Member
FDIC

6043 Central Avenue • 3395 Willowcreek Road • 1stsource.com/business



The PORTAGE SUMMER MUSIC SERIES will be collecting donations for the PORTAGE FOOD PANTRY and GABRIEL'S HORN SHELTER. We kindly request that people help us support our community by bringing in items to donate, such as: canned goods, nonperishable boxed food items, paper goods, toothpaste, toothbrushes, paper towels, shampoo, conditioner, hygiene items, etc. Cash donations are also accepted and appreciated.

JUNE 1

Jim Bulanda
Salute to the Stars
Song & Comedy

JUNE 8

Hot Sauce
Pop Music and Vocals

JUNE 15

Rick Lindy & The Wild Ones
Country, Pop and Rock

JUNE 22

Chris & Lou
Great Music & Vocals
Over the Years

JUNE 29

Oscar & The Majestics
60s, 70s, 80s and More

JULY 6

Larry Spurlock
Little Big Band
Big Band Music

JULY 13

Rod Stuart
Rod Stuart

JULY 20

Island 49
Jimmy Buffett
Tribute Show

JULY 27

Wolffgang
Hobart H.S. Girls Choir

AUGUST 3

Harley Hehr
Music, Song, Comedy,
Impressions

AUGUST 10

Neil Diamond Tribute
Songs of Neil Diamond

AUGUST 17

Elvis Tribute
Songs of Elvis

AUGUST 24

Oscar & The Majestics
60s, 70s, 80s and More

AUGUST 31

Rick Lindy & The Wild Ones
Country, Pop and Rock

★ FREE ADMISSION ★

Computer Education Institute



CALL 926-5740

TO SCHEDULE TRAINING TODAY!
WWW.CEI-EDU.COM

Ma's Li'L Champs Learning Academy

"We have the hearts to make a difference"

Suzanne Wabuda, Owner
Angela Knight, Director

6564 Pan Am Drive
Portage, IN 46368
219-763-0020
www.maslilchamps.com



We're Well-Equipped to Meet your Healthcare Needs

Right Here in Portage

Northwest Health – Portage

3630 Willowcreek Road

219-364-3000

NWHealthIN.com



24/7 Emergency Department

Outpatient Laboratory

No appointment necessary.

Urgent Care

No appointment necessary.

Women's and Diagnostic Imaging

Mammogram – MRI – CT Scan – Ultrasound

To schedule an appointment,
call 219-983-8399.

Inpatient Rehabilitation

Outpatient Surgery

PHYSICIAN OFFICES

Northwest Medical Group

NWMedicalGroup.com

Primary Care

Cardiology

Gastroenterology

Pediatrics

Urology

Also in Portage...

Northwest Medical Group – Primary Care

6200 Central Avenue

Portage, IN 46368

219-762-3175

Outpatient Rehab & Sleep Center

6040 Lute Road

Portage, IN 46368

Rehab: 219-764-1053

Sleep: 219-764-4567



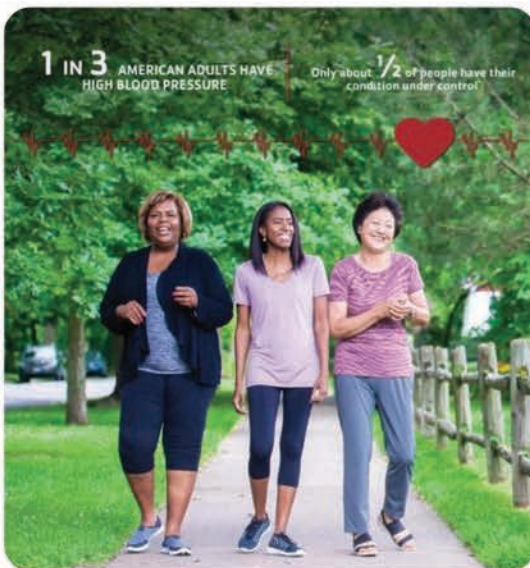
NWHealthIN.com

Northwest Health



FOR YOUTH DEVELOPMENT®
FOR HEALTHY LIVING
FOR SOCIAL RESPONSIBILITY

Blood Pressure Self-Monitoring Program PORTAGE TOWNSHIP YMCA



The simple process of checking and recording your blood pressure at least twice a month over a period of four months has been shown to lower blood pressure in some people with hypertension.

Blood Pressure Self-Monitoring is an evidence-based program featuring personalized support for developing routine, tips for maintaining cardiovascular health & nutrition education. Eligibility requirements apply. See website for details.

Registration Opens May 24, 2021!

\$10 Member | \$15 Non-Member

Includes FREE seminars and blood pressure cuff.



Ready-to-Eat **FREE** Meals FOR ALL YOUTH & ADULTS



Meals are served daily, Monday - Friday, at the YMCA and at select off-site locations. See website for serving times and locations.

Thanks to **United Way of Porter County** for financially supporting our free meals program through grant funds that improve nutrition and reduce hunger & food insecurity throughout our community. This institution is an equal opportunity provider.



PORTAGE TOWNSHIP YMCA | 3100 Willowcreek Rd. Portage, IN 46368 | ymcaofportage.org

Amy Parker
Executive Director
(219) 762-9761
aparker@portagein.org



OUR MISSION

Business Retention, Expansion & Attraction

OUR VISION

The Portage Economic Development Corporation (Portage EDC) will provide full service support for the development, growth, success, attraction and innovation of businesses in Portage. We will be recognized as a community leader through partnerships, facilitation technological development / training, regional collaboration and helping to build a skilled workforce. We are the trusted premiere choice for business opportunities, economic development and partnership. We support a quality of life in the Portage community.



PLATINUM MEMBERS

IBEW Local 531
MonoSol LLC
NIPSCO
Northshore Health Centers
Northwest Health

(219) 762-9761

6100 Southport Rd, Portage, IN | info@portagein.org | portagein.org



Economic Development

Our Economic Development Service for the Greater Portage Area include:

New Business Attraction

- Site Marketing
- Site Selection
- Gov't / Business Intermediary
- Local Incentive Assistance

Existing Business Retention & Expansion

- Facility Expansion
- New Equipment
- Training Facilitation Assistance
- Identification of Additional Resources
- Meetings & Educational Events
- Workforce Readiness

GOLD MEMBERS

Centier Bank
Horizon Bank
Port of Indiana, Burns Harbor
St. Mary Medical Center

SILVER MEMBERS

Holladay Properties
Indiana American Water Co.
McColly/Bennett
Commercial Real Estate
NLMK Indiana

PSC Machining & Engineering, Inc.
Ratner Steel Supply Co.
The Ross Group
Samuelson Insurance Agency

BRONZE MEMBERS

Covanta
First State Bank of Porter
Hodges & Davis PC
Pangere Corporation (The)
Vidimos Inc.
Yongli America

Rental Facilities

Portage Parks has the venue for any event. From the elegant and refined to the noisy and colorful, Woodland Park, Countryside Park and Portage Lakefront and Riverwalk have the facilities and the staff to help make your next event a huge success!

WOODLAND PARK COMMUNITY CENTER

2100 Willowcreek Road, Portage

- **OAKWOOD HALL**
Accommodates up to 650 guests
- **SYCAMORE HALL**
Accommodates up to 160 guests
- **WOODLAND PARK – BLUE SPRUCE**
Accommodates up to 65 guests

COUNTRYSIDE PARK

5250 US Highway 6, Portage

- **COUNTRYSIDE HALL**
Accommodates up to 90 guests





OPEN AIR PAVILION

Riverwalk Drive, Portage
Accommodates up to 480 guests

Our Open Air Pavilion is ideal for picnics, corporate events, etc:

- Weekend rentals: Fri/Sat/Sun
- Rental fee: \$800 flat for both residents & non-residents
- Kitchenette & bathrooms

PICNIC SHELTER RENTALS

• WOODLAND PARK SHELTERS

- Mohawk
- Ottawa
- Tomahawk
- Wigwan
- Arrowhead

• IMAGINATION GLEN SHELTER

- West

SHELTERS	CAPACITY	RESIDENT FEE	NON-RESIDENT FEE
Ottawa	100	\$125	\$150
Arrowhead	50	\$85	\$105
Tomahawk	50	\$85	\$105
Wigwam	50	\$85	\$105
Mohawk	50	\$85	\$105
Imagination Glen	50	\$50	\$75
Gilbert Park	75	\$60	\$75
Woodland Park Grounds	300+	\$500	\$600

SPORTS FACILITY RENTALS

- Imagination Glen Softball Complex
- Imagination Glen Trails
- Woodland Park Indoor Soccer
- Countryside Practice Field
- Prairie Duneland Trail
- Iron Horse Trail



To reserve a venue for your next event call us or visit us online!

219.762.1675 | www.inportageparks.com

Founders Square in Portage is *WHERE TO BE*



Fridays from May 14th - Aug 27th

MARKET ON THE SQUARE

Founders Square Park, Portage

Vendor booths: 3:00 pm - 9:00 pm

We will have fresh produce, fresh meats, unique crafts, vendors, food trucks/tents, and live music.

If you're interested in being a vendor, please email Amy Armstrong at: aarmstrong@portage-in.com



Movies

Music

Market



MUSIC IN THE PARK

Amphitheater

All concerts are from 6 pm - 7:30 pm

Head to the amphitheater to enjoy music performed live by local musicians. Bands take the stage to perform at 6:00 PM. (See sidebar to the right for a list of the performers.)

MAY 14TH

Strings Beyond
Description

MAY 21ST

Dan Reisen

MAY 28TH

John "Dondo"

JUNE 4TH

DJ and Kris from
stop.drop.rewind

JUNE 11TH

Strings Beyond
Description

JUNE 25TH

Slickmoss

JULY 2ND

E-man

JULY 9TH

Ally Christian

JULY 16TH

Kris and DJ from
stop.drop.rewind

JULY 23RD

David Hernandez

JULY 30TH

Slick Moss

AUGUST 6TH

Ally Christian

AUGUST 13TH

For Pete's Sake

AUGUST 20TH

Strings Beyond
Description

AUGUST 27TH

E-Man



FLASHBACK MOVIES

MOVIES ON THE SQUARE

Amphitheater

Movies start at dusk



Top off your Friday evening with a family friendly flashback movie at the Amphitheater in Founders Square. Bring your chairs, blankets and your friends!

Admission is FREE.

- JUNE 4TH** The Neverending Story
- JUNE 11TH** Honey I Shrunk the Kids
- JUNE 18TH** Field of Dreams
- JUNE 25TH** The Karate Kid
- JULY 2ND** Dirty Dancing
- JULY 9TH** Back to the Future
- JULY 16TH** Breakfast at Tiffany's
- JULY 23RD** Land Before Time
- JULY 30TH** Wizard of Oz

OTHER EVENTS IN PORTAGE

MARCH 27TH

Kiwanis Pancake Breakfast
& Easter-Egg Hunt
WOODLAND PARK

APRIL 24TH

Portage Rebuilding Together

MAY 6TH

Mayor's Prayer Breakfast

MAY 24TH

Memorial Day Parade
AMERICAN LEGION POST #260

JULY 3RD

Parade & Festival

JULY 8TH

Portage Chamber
Community & Business Night
FOUNDERS SQUARE PARK
4:00PM - 7:00PM

AUGUST 6TH

Relay for Life
WILLOWCREEK M.S.
4:00PM - 12:00AM

SEPTEMBER 18TH

Brewfest (YMCA/Chamber)
OPEN AIR PAVILION

OCTOBER

Light up the Goards (PEP)

DECEMBER 4TH

Toys for Tots & Kiwanis Chili
Luncheon & Tree Lighting
FOUNDERS SQUARE

Christmas Park Lighting
FOUNDERS SQUARE

COMMUNITY CONTACTS

BOYS & GIRLS CLUBS

Portage Unit..... 762-4613
Porter County 464-7282
South Haven Unit..... 759-2565

ECONOMIC DEVELOPMENT

AmeriPlex at the Port 841-6416
holladayproperties.com/contact

Center of Workforce Innovations
Ph 462-2940
innovativeworkforce.com

NW Indiana Forum 763-6303

NWI Small Bus Dev Ctr 838-0176
nwisbdc.org

PEDCO 762-9761
portagein.org

Port of Indiana..... 787-8636
portsofindiana.com/poi/burns_harbor/overview.cfm

EDUCATION

PUBLIC EDUCATION

Neighbors' New Vistas HS (9-12)
Ph 850-4448
5201 US Hwy 6

Portage Township Schools (Admin)
Ph 762-6511
portage.k12.in.us

PRIVATE SCHOOLS

Nativity of Our Savior School (K-8)
Ph 763-2400
2929 Willowcreek Rd

Portage Christian School (PK-12)
Ph 762-8962
3040 Arlene St

South Haven Christian School (PK-6)
Ph 759-5313
786 Juniper Rd (Valparaiso)

EDUCATION (continued)

ADULT EDUCATION

Ph 763-8005
5201 US Hwy 6

Indiana University NW 980-6950
iun.edu

Ivy Tech Comm College..... 464-8514
ivytech.edu

Neighbors' Educational Oppts (NEO)
Ph 850-4448
Neoadulted.org

Purdue Univ NC 462-4197 x5505
pnc.edu

GOVERNMENT OFFICES

Portage License Branch 762-2216
3339 Willowcreek Road

Social Security Admin. (888) 472-6120
Local Ph 464-1015

US Postal Service 762-6571
2701 Willowcreek Rd

HEALTH CARE

AIDS Hotline..... (800) 342-2437

Alcohol & Drug Abuse (800) 252-6465

NorthShore Health Centers.. 763-8112
northshorehealth.org

Poison Control..... (800) 382-9097

Portage St. Mary Medical Center Clinic
Ph (866) 835-0312

Porter Portage Hospital Campus
Ph 364-3000

MASS TRANSPORTATION

Coach USA..... (800) 248-8747

NW Indiana Commuter Trans. District /
South Shore (800) 356-2079
nictd.com

MISC COMPANIES

Council on Aging 464-9736

First Contact 764-7322

Northshore..... 763t-8112

Portage Resale Shop 764-3375

Portage Twp Food Pantry.... 763-4257

Portage Twp YMCA..... 762-YMCA
ymcaofportage.org

Porter Cty Section 8 Housing
Ph (800) 622-4993

Salvation Army 762-9191

SNAP (Food Stamps) .. (800) 403-0864

WIC 762-3185

Work One 762-6592

PUBLIC LIBRARIES

pcpls.lib.in.us

Portage Public Library 763-1508

Porter Cty Public Library 462-0524

South Haven Public Library 759-4474

TELEPHONE COMPANIES

AT&T 762-2571

Frontier..... 1-877-6198

Verizon 762-8055

TOURISM

Porter County Convention,
Recreation & Visitors Bureau
(Indiana Dunes Tourism
Visitor Center) 926-2255
indianadunes.com

UTILITIES

Aqua Indiana, Inc.
www.aquaamerica.com

Indiana-American Water Co.
Ph 886-3770
650 Madison, Gary

NIPSCO (800) 464-7726
nipsco.com

Portage Utility Services -
Sanitary & Stormwater 762-2016
www.portagein.gov

LOCAL FIRST RESPONDERS

AMBULANCE

South Haven
759-3919

POLICE

Portage Police Dept
762-3122
6260 Central Ave
www.portagein.gov

Porter County Sheriff
477-3000
2755 SR 49 (Valpo)
portercountysheriff.com

Indiana State Police
(219) 696-6242

FIRE

Portage - Station #1
764-5791
3401 Swanson Rd

Portage - Station #2
764-5770
6275 Old Porter Rd

Portage - Station #3
764-5772
6300 Central Ave

Ogden Dunes
762-4125
115 Hillcrest Rd

South Haven
759-3919
398 W. 700 N. (Valpo)



In the case of an
EMERGENCY,
ALWAYS

DIAL
9-1-1

Public Insurance Adjusters are

the only property loss professionals
licensed to work on behalf of
policyholders. We are your advocates
during the entire complicated insurance
claims process. We are experts in
home and business policy language.

- ✓ When You Do Not Have Good Neighbors
- ✓ You're Not In Good Hands
- ✓ No One Is On Your Side

You Need A Public Insurance Adjuster

to stand with you and get you back where you belong. - PSA



Licensed Property Loss PROFESSIONALS



" We do not get paid until you do! "

219.706.5973
team@psadjusting.com
www.publicserviceadjusting.com



Best Western Plus Portage Hotel & Suites
6200 Melton Road
Portage, IN 46368
219.734.6727
bwportage.com

CORPORATE AND
GROUP RATES

3 MEETING ROOMS

COMPLIMENTARY
HOT BREAKFAST

INDOOR HEATED
POOL AND FAMILY
AQUATIC CENTER

ONSITE BAR AND
LOUNGE

Business Real Estate Insurance



219.370.6946



nwi360tours.com



hello@nwi360tours.com



*Walk through
properties
from
anywhere!*



nwi 360 tours

be there without being there

Membership Benefits

Invest in your business – *and our community!* – by becoming a member of the **GREATER PORTAGE CHAMBER OF COMMERCE.**

We are the central organization which businesses in our community use to promote projects, products and services that will benefit residents and other businesses in the Portage community.

Education

ADVERTISING

NETWORKING

Chamber Member OPPORTUNITIES:

Feature your business at many networking events.

Be recognized in the community through State and National Award programs.

Participate in many advertising opportunities.

Link your business to the Portage Chamber website.

Your company's information will be listed online in the Portage Chamber business directory.

Participate in legislative conference calls on a regular basis with our city, county and state officials.

MIDWEEK MINGLE

4th Wed of each month
4 PM – 6 PM

Locations rotate monthly to a member's business

RISE, SHINE & LEARN

2nd Thurs of each month
7:30 AM

at Best Western

LAMPPOST HOLIDAY BANNERS

Nov – Jan

Banners are placed along Central Ave & Founders Square

AMBASSADOR COMMITTEE MEETING

2nd Mon of each month
8:00 AM

(Location varies)

PORTAGE PRESS

Our E-Newsletter is delivered every Wed. Share your business news with the community!

TALK TO THE COACH

4th Fri each month
9:00 AM – 11:00 AM

at Portage Chamber

FULL CIRCLE YOUNG PROS.

3rd Friday of the month
12 PM – 1 PM

Location alternates between Chesterton & Portage

Visibility

Puzzled about your next move?

Whatever you need in buying or selling a home,

► ***We make it happen!***

Whether you are building, buying, selling or trading, there is only one place to turn: **PORTAGE REAL ESTATE, INC. & HATCH CONSTRUCTION**. We have been a Top Sales and Listing Agency since 1979. Our professionals will sit down with you and work out the best possible plan to help you make the move you want to make.



Established 1960

3179 Willowcreek Road, Portage

LEO HATCH, JR.
leohatchjrpre@yahoo.com
Mobile: (219) 395-6100

- *President, Principal Broker, Owner, Manager, Notary Public (On-Site)*
- *42 years of experience as a Licensed Real Estate Broker.*

Office Lines: (219) 762-2186
(219) 762-2187
(219) 762-2188

Mobile: (219) 395-6100

Fax: (219) 762-4922

- Call us for a **FREE MARKET ANALYSIS** on your home!
- List your home at 5% commission; 30 day listing.
- Receive a **FREE HOME WARRANTY!** when you list your home with Portage Real Estate:

Ph: (219) 762-2186

www.portagerealestateinc.com

Joe Gorbea
Broker Associate
(224) 558-5945

John C. Hatch
Broker Assoc. since 1977
(219) 262-4693

Brenda Huggins
Broker Associate
(219) 628-6989

Jaime Ontiveros
Broker Associate
(219) 309-1317

Lori Staack
Broker Associate
(219) 242-5047

Janet Stepaniak
Broker Associate
(219) 802-3809

Theodore Uzelec, Sr.
Broker Associate, FHA Certified Appraiser
(219) 742-2827 or
(219) 764-7931

Melissa Wroblewski
Broker Associate
(219) 262-4477

HATCH CONSTRUCTION
(219) 762-2800

www.realtor.com
www.gniarmls.com

**CELEBRATING
61 YEARS IN
BUSINESS**

**OUR CLIENTS
ARE NUMBER 1!**

**WE LOVE
REFERRALS!**

